



# **WALE:** **A Section** **of WLA**

Summer 2016

WALE Newsletter

Page 1

## **WALE... WAshtington Library Employees**

### **Our Purpose:**

- To build a communication network among library employees
- To encourage continuing education for library personnel
- To improve library service through skill development

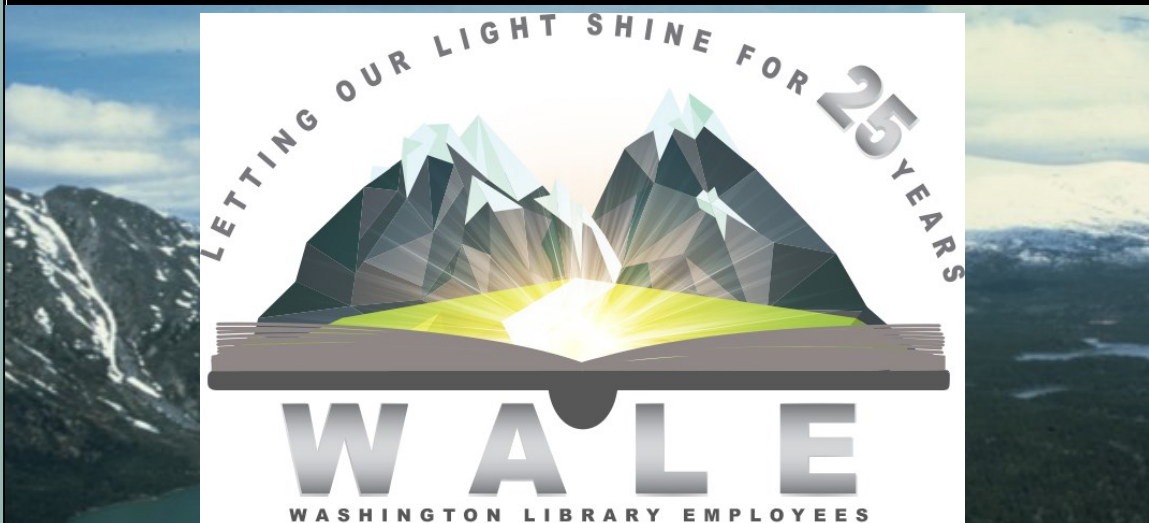
### **We Promote:**

- Better understanding and communication within individual communities and throughout the state
- Improved working relations in the library community
- Improved services to the library patron

### **Need WALE info?**

[www.wla.org/wale](http://www.wla.org/wale)

Remember to  
**connect** with  
**WALE**  
on Facebook!



**WLA: WALE Conference: October 24-26, 2016 - Chelan, WA**

[WALE Conference  
Registration Opens  
July 27th!](#)

[Room Reservations  
Available Now!](#)

**WALE**  
**'S**  
**VOLUNTEERS**

**Those who can, do.  
Those who can do more,  
volunteer!**

Join WALE! No role is too small; it's all about your skills, interests, and how much time you're able to commit. Please contact Conference Chair [Brian Hulse](#)

Need Funds to Attend the Conference?  
WALE Can Help!

[Apply for the 2016 WALE Scholarship](#)

Deadline: September 2, 2016

## WALE Officers

### CHAIR:

Lisa Vos  
Libraries of Stevens County

### VICE CHAIR:

Brian Hulsey  
Whatcom Co Library System

### SECRETARY:

Chaz Rollins  
Seattle Public Library

### WEB MASTER:

Mary Wise  
James E. Brooks Library,  
Central Wash. University

### PAST CHAIR:

Joe Olayvar  
Washington State Library



## 2016 WALE Conference Committee

### CONFERENCE CHAIR:

[Brian Hulsey](#)

### PROGRAM CHAIR:

[Heidi Chittim](#)

### LOCAL ARRANGEMENTS:

[Lisa Vos](#)

### FACILITIES:

[Katie Park](#)

### PRINTING & SUPPLIES:

[April Hernandez](#)

### HISTORIAN:

[Carol Ellison](#)

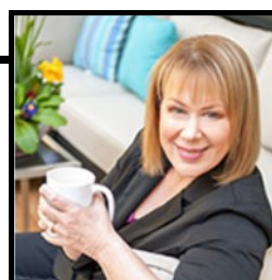
### CONFERENCE PROGRAM COORDINATOR:

[Kate Laughlin](#)

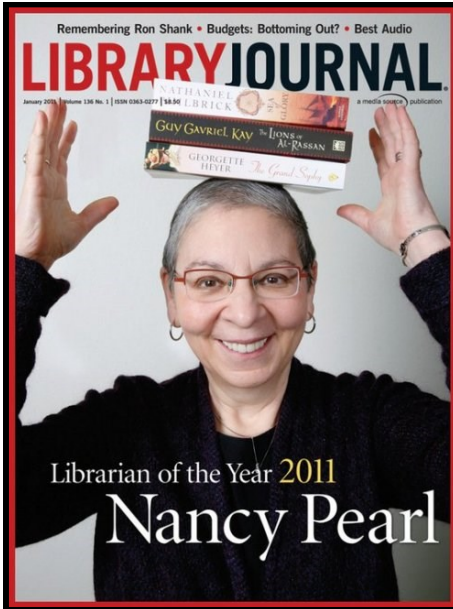
# *A Night of Romance*

October 25th, 2016  
@ #WALE16

Join us for a celebration of WALE's 25th Anniversary with "A Night of Romance." Hosted by the [Romance Writers of America's 2016 Librarian of the Year](#), Robin Bradford, enjoy an evening of good food, fun entertainment, and chocolate! In a salon style format we all get to watch, Robin will interview famous romance authorss [Cherry Adair](#); [Susan Mallery](#) and [Lauren Dane](#). With questions taken from the audience in advance, you can expect some surprising answers and colorful stories will be shared, along with a lot of laughs and maybe a little blushing!



## #WALE16 KEYNOTE LINEUP



Having worked as a librarian and bookseller in Detroit, Tulsa, and Seattle, Pearl's knowledge of and love for books is unmatched. In 1998, she developed the program "If All of Seattle Read the Same Book," which spread across the country. The former Executive Director of the Washington Center for the Book, Pearl celebrates the written word by speaking at bookstores and libraries across the country and on her monthly television program [Book Lust with Nancy Pearl](#) on the [Seattle Channel](#). She is a regular commentator about books on National Public Radio's "Morning Edition" and NPR affiliate stations [KUOW](#) in Seattle and [KWGS](#) in Tulsa. In 2004, Pearl became the 50th winner of the Women's National Book Association Award for her extraordinary contribution to the world of books.

Robin Bradford works for the [Timberland Regional Library District](#) in Tumwater, WA. She was recognized as [RWA's 2016 Librarian of the Year](#). Robin is addicted to books and dedicated to helping others discover a love of reading. She has earned a BA and MA in English, a MS in Library Science, and a JD, but has found a home in building reader-focused, popular collections in public libraries. She has worked with authors to help get their titles into these collections, worked with librarians to push for equal treatment of genre fiction, and worked with readers so that they can find their favorite authors on their library's shelves.



Brianna Hoffman is the [WA Library Association's](#) 2016-17 President. Brianna received her Master's Degree in Library Science from [Emporia State University](#) in 2013 and currently works as a Library Assistant II at the [Richland Public Library](#). She has worked in public libraries for over twelve years in many capacities, including page, circulation assistant, and customer service specialist. Brianna has been active in the WALE Section of WLA as a member of several committees, including co-chairing the 2012 WALE Conference. She served as a Director on the WLA board for two years before beginning her WLA Presidential term. Brianna is incurably curious and a pop culture enthusiast. When she's not doing reader's advisory or providing research assistance, she may be found traveling with her family to places she's never been, or working on her crow pose in the yoga studio.



## Benefits of your WLA/WALE Membership:

- Legislative Advocacy
- WLA/WALE website and resources
- ALKI—WLA's journal with current & enduring issues & articles
- WLA & WALE Conferences for continuing education & networking.

## Upcoming Events

August 3-5, 2016  
[PNLA Conference](#)  
Calgary, AB

October 15, 2016  
[WLMA Conference](#)  
Des Moines, WA

October 20-21, 2016  
[Northwest eLearn Conference](#)  
Eugene, OR

October 27-29, 2016  
[ARSL Conference](#)  
Fargo, ND

September 8-9, 2016  
[Northwest Interlibrary Loan and Resource Sharing](#)  
Portland, OR

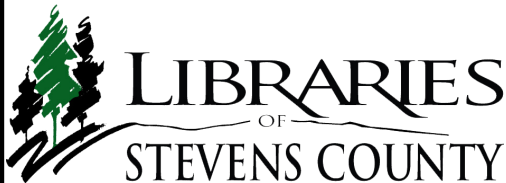
October 24 - 26, 2016  
[WALE Conference](#)  
Chelan, WA

November 4-6, 2016  
[YALSA Symposium](#)  
Pittsburg, PA

January 8-12, 2016

March 20-24, 2017  
[PLA Leadership Academy](#)  
Portland, OR

## Meet Katheryn Park from the



Where do you work, and what do you do? **Chewelah Public Library. I am the Storytime Librarian and a Library Assistant.**

What is the best part of your library job? **The people and storytime days with lots of toddlers excited to learn.**

How long have you been a WALE member? **New to WALE this year**

What does WALE mean to you? **Libraries working together to make a better experience for their patrons.**

What is your favorite classic author? **Douglas Adams**

Can you share something from your bucket list? **Visiting the pyramids in Egypt**

Can you share favorite a Washington state destination? **Tennant Lake Interpretive Center in Ferndale, WA**

What is a favorite recent book you have read? **Eon by Alison Goodman**

What's your favorite tip to give people about the library or library services? **Please ask us anything. We will find the answer for you.**

Do you have a favorite movie or TV show? **Star Trek (any of them)**

Any pet peeves about library-land? **Getting items returned that look like they went through a tornado to make it back to the library.**

What is your favorite vacation spot? **Wapato Point at Lake Chelan**

What kind of book would you like to write? **A Childrens book.**

What's your best childhood book related memory? **Reading under the stars while camping at the Lake Chelan State Park every summer.**

**Extra Info: I worked at the Western Washington University Library for 4 years while getting my degree in Outdoor Education and Environmental Sciences. I have two boys ages 3 and 5. I love hiking through the Colville forest and teaching my boys all the great things I know about the wildlife and plants in our area. Working for the library is a dream job for me and I feel very lucky that I get to work where I do.**